



Since 2006

<https://jyf-metal.com>

Engineering Decoration Catalogue

Contact: Lucky Zou

Contact information: 133 3648 6800 (Wechat)

Email: zoulucky@fsjinyifan.com

Factory (Office) address: No. 3, block 4, Liyuan Logistics City, No. 38, Gongye Third Road, Tanzhou Industrial Zone, Chencun Town, Shunde District, Foshan City, Guangdong Province

联系人: 邹小姐

联系方式: 133 3648 6800 (同微信)

邮箱: zoulucky@fsjinyifan.com

工厂(办公)地址: 广东省佛山市顺德区陈村镇潭洲工业区工业三路38号力源物流城B区4座3号

Foshan Jinyifan Metal Products Co., Ltd.

佛山市金一帆金属制品有限公司

Company introduction 公司介绍

金一帆长期致力于不锈钢制品设计和生产，是一家集研发、设计、制造、销售、安装于一体的金属制品专业厂家。

我们致力于为客户提供更好的产品体验，完整的服务体系和最佳解决方案。产品主要服务于国内外星级酒店、商业场所、别墅、市政工程等，我们长期服务于世界著名酒店，希尔顿、喜来登、威斯丁等，服务于国内万科房产、保利地产、四季连锁酒店等装饰工程项目。在高端不锈钢装饰板材和定制产品市场领域具有领先的影响力，成为国内外装饰工程定制首选服务商。

我们拥有专业的工程师和设计团队，为客户提供最好的质量和满足个性化的要求，我们可以根据您的工程需要提供更好的设计和生产有利的建议，确保您的产品与您的使用能够完美结合，同事为您节省成本，为您的金属建筑装饰工程提供设计制造解决方案。

作为不锈钢行业的专业团队，通过有效的订单安排，真诚的工作态度和严格的质量控制，金一帆与国内外许多知名企业建立了很好的长期合作关系，产品远销欧美、中东、东南亚，质量、信誉和优质的产品和服务一直是并将永远是我们追求的目标。

Jinyifan has been committed to providing One-stop Solution Service for a long time. As a professional metal product factory, we are not only specialized in designing and producing stainless steel products, but also R & D, selling and installation

Specially Occupied in providing product experience service, complete service system and best one-stop solutions, we are well received by many customers at home and abroad, who are from world famous hotels like Hilton, Sheraton, Westin and Vanke, Poly Real Estate and Four Seasons Hotels in China as well as other Commercial places, villas and municipal engineering project. With a leading influence in the high-end stainless steel decorative plate and customized products market, Jinyifan has become the preferred service provider of decoration engineering customization at home and abroad.

We have professional engineers and design teams, who are excellent in providing customers with the best quality and meeting their personalized requirements. Professional design and production suggestions are given by our engineers according to customer's needs to ensure their perfect combination with products with less cost.

As a professional team in stainless steel industry, Jinyifan establishes a good long term cooperative relationship with many well-known enterprises at home and abroad through our effective order arrangement, sincere attitude and strict quality control. Our products are mainly exported to Europe, America and Middle East and Southeast Asia. Perfect products, great service and good reputation will always be our goals that we have been pursuing.



Product introduction 产品介绍



Water ripple Stainless steel sheets main color is gold, rose gold, titanium gold, and others.
水波纹不锈钢板的主要颜色是钛金、玫瑰金、黑钛等。

Surface Finished: mirror、Brushed
表面处理：镜面、拉丝

Size: 1220*2440mm or custom.

尺寸：1220*2440mm或定制。

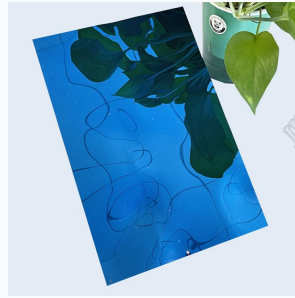
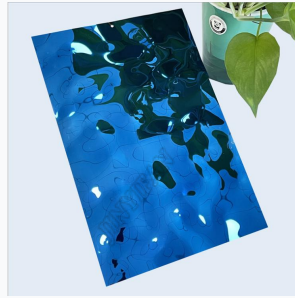
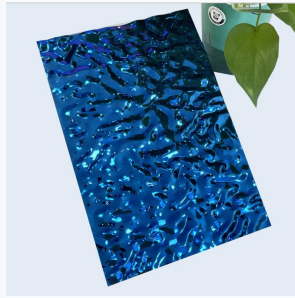
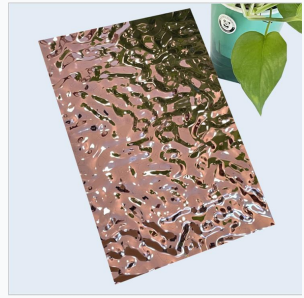
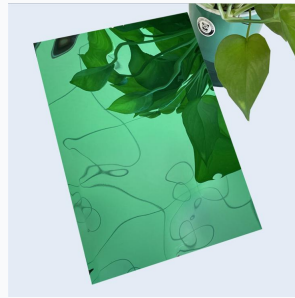
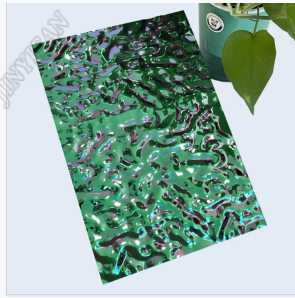
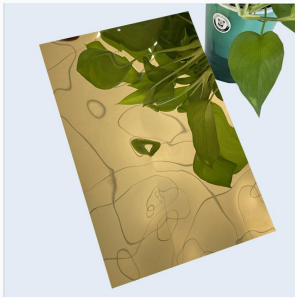
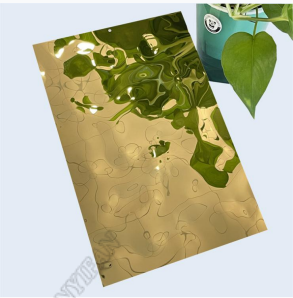
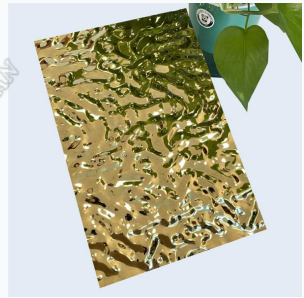
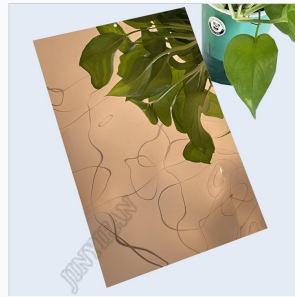
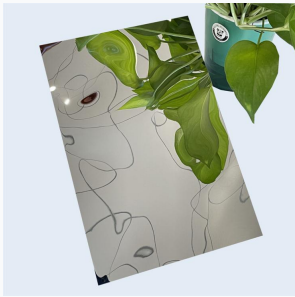
Thickness: 0.3-2.0mm or custom.

厚度：0.3-3.0mm或定制。

Application : Feature walls , Bar , Desk faces , Wall art , Ceilings , Building facades.
应用：功能墙，酒吧，桌面，墙面艺术，天花板，建筑立面。



Stainless steel embossed plate: die stamping, the concave and convex depth of the plate is different because of the pattern
不锈钢压花板：模具冲压，板上的凹凸深度因图案而不同

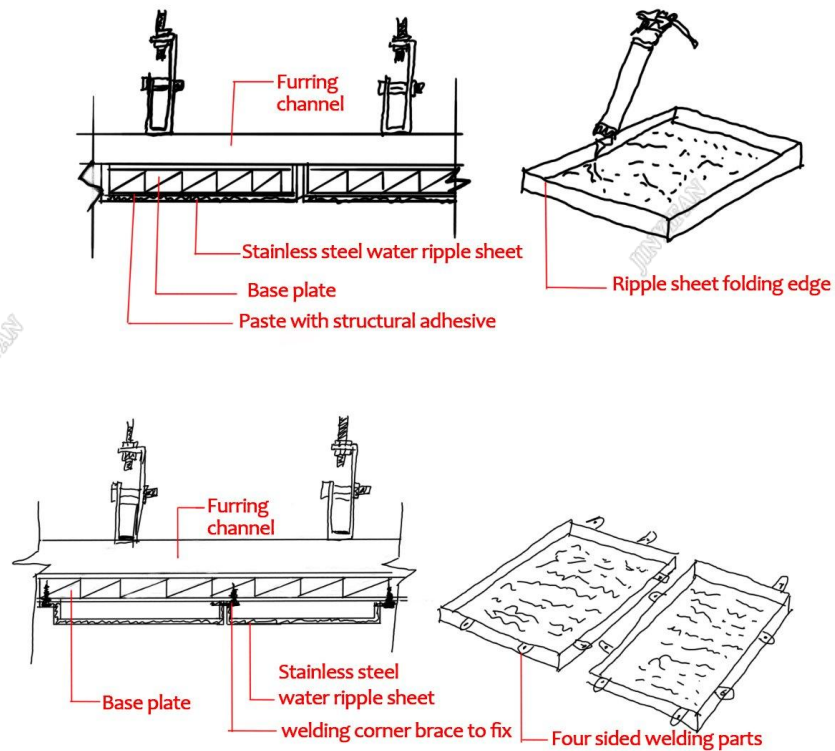
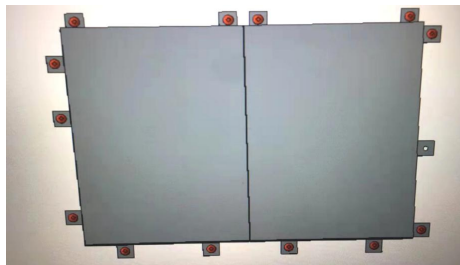


Installation mode 安装方式



weld intersected
angle connector
on water ripple
and fix it with
screws

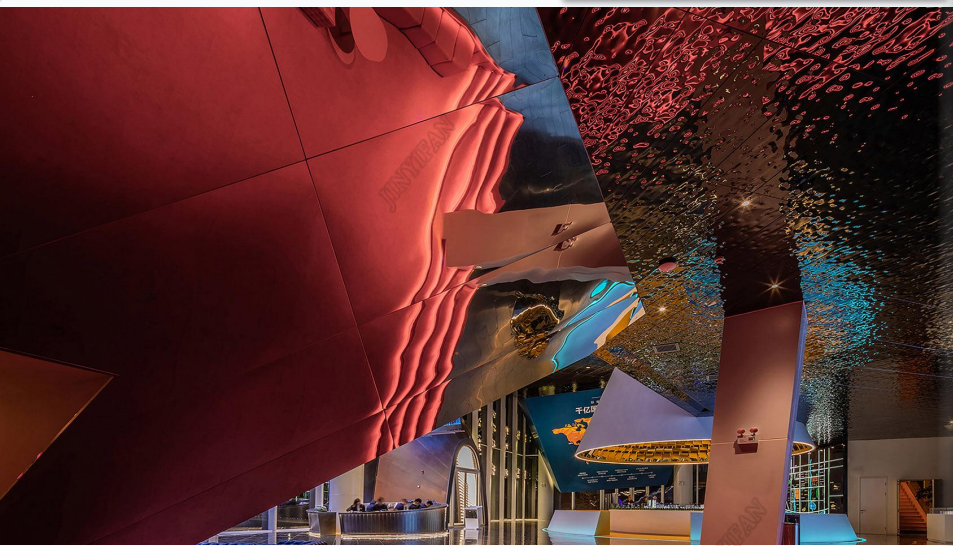
先交叉焊接角码，再
用螺丝固定在墙上

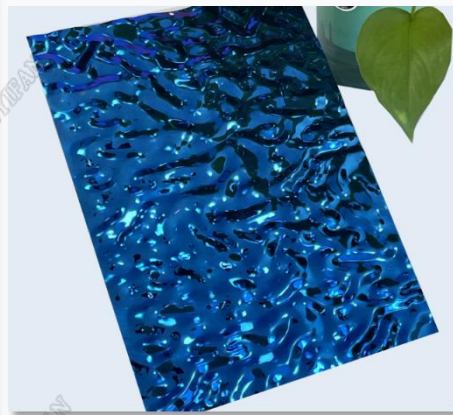


Installation method of stainless steel water ripple sheet

Project Case 工程展示

Ceiling decoration
天花装饰



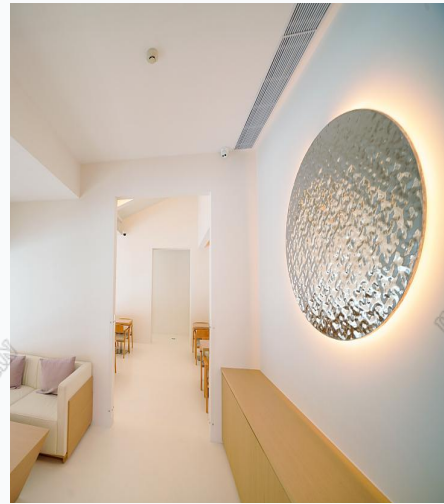
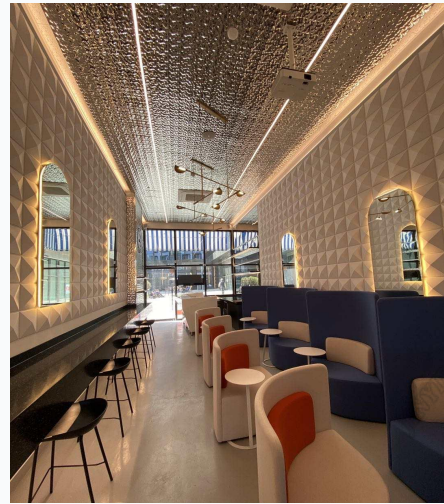
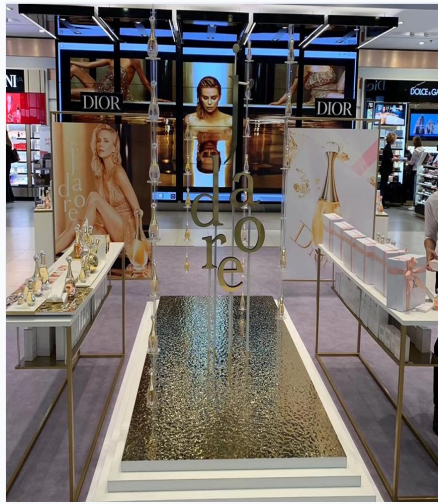


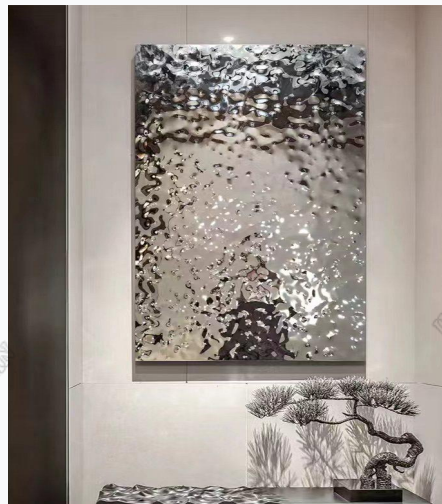
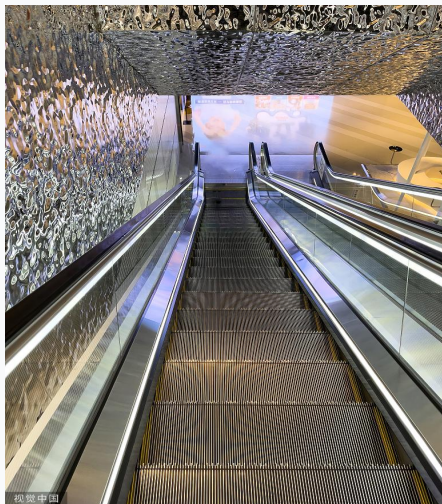
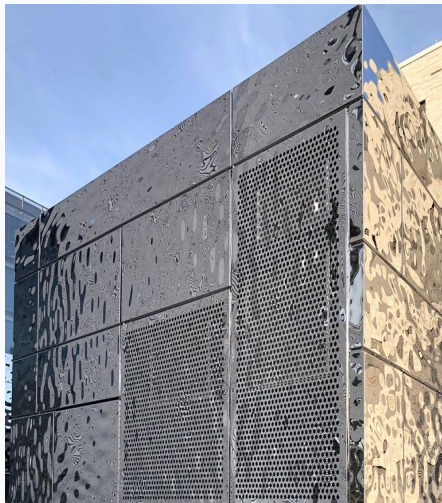
Ceiling decoration
天花装饰



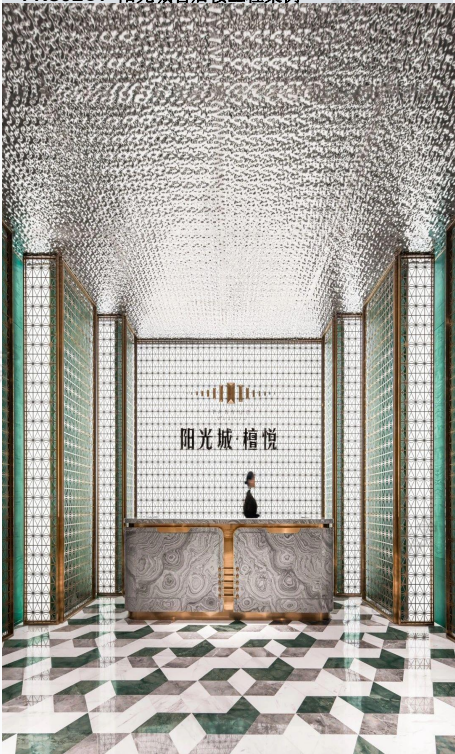
Background decoration
背景装饰





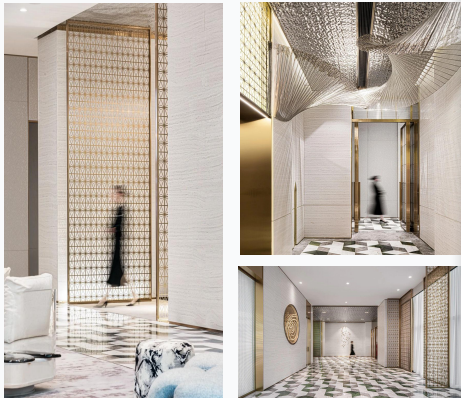


PROJECT CASE .
YANGGUANGCITYAFTER-SALES BUILDING
PROJECT 阳光城售后楼工程案例



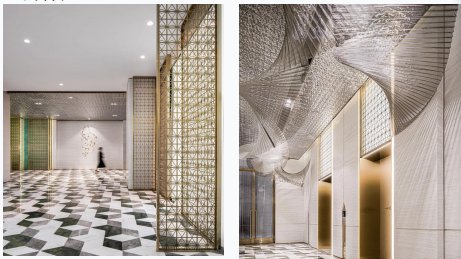
Entering the reception area of the sales office, the top uses the stainless steel corrugated plate which is popular among designers nowadays, and the reception desk uses the combination of metal and marble. The overall effect is very metal.

走进售楼处的接待区，顶部使用了现今颇受设计师喜爱的不锈钢水波纹板，接待台则运用了金属+大理石的组合搭配，整体的效果就很金属范。



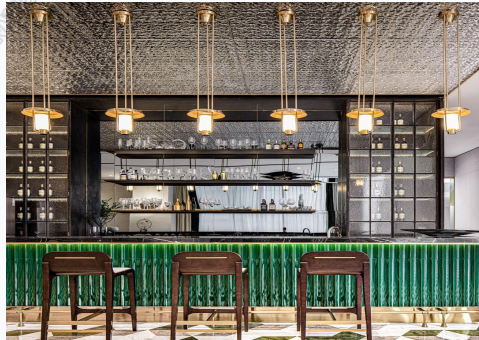
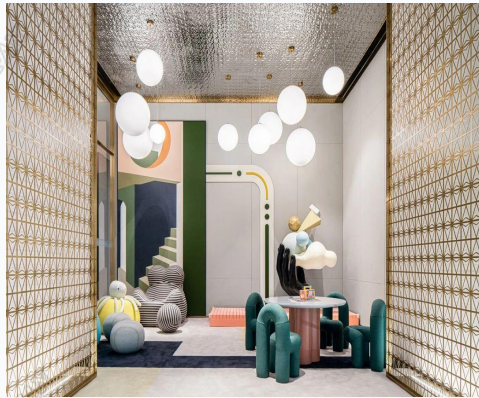
Designers in the space through the metal mirror reflection and the expression of light and shadow to enhance the artistic tonality of the space, symbolizing the characteristics of the jewelry solid, shining and lasting.

设计师在空间里通过金属镜面反射以及光影的表达来增强空间的艺术调性，象征珠宝坚固、闪耀、恒久远的特性。



In the elevator hall, crystal works of art, together with the metal elevator car and gold hollow partition, form the effect of pearlescent.

在电梯间处，水晶的艺术品，加上金属的电梯厢和金色的镂空隔断，形成了珠光闪耀的效果

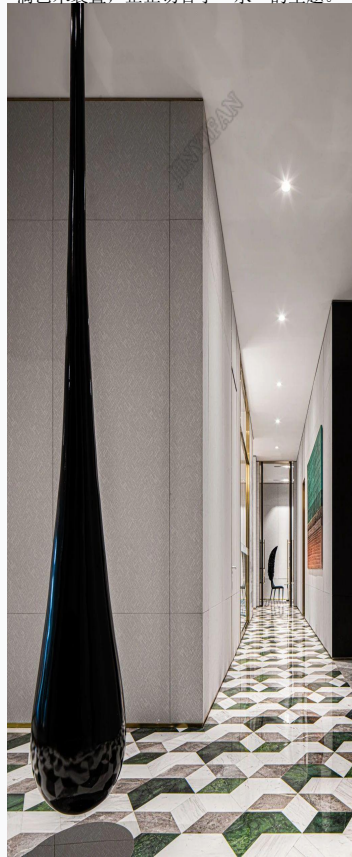


The background enhances the level of space through the artistic presentation and the sense of sequence of stone. The transparent metal screen, as the main hall partition, well separates the hall and the reception area. The two seem to be integrated but do not interfere with each other. Through the light refraction, it seems to be playing a game of light and shadow, which is clean and interesting.

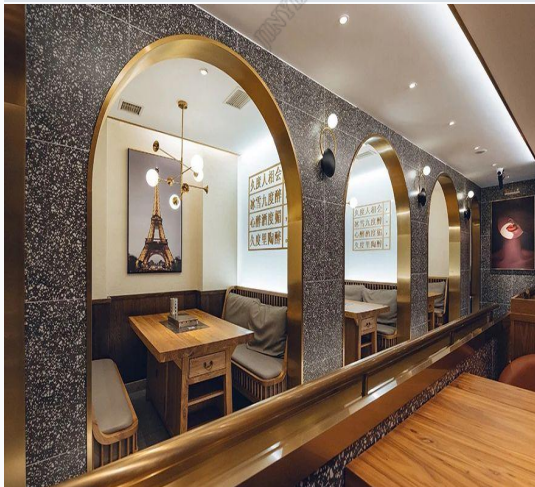
背景通过艺术品呈现与石材的序列感增强空间的层次，通透的金属屏风作为大堂隔断，很好的隔开了大厅与接待区，两者看似一体却又互不干扰，透过灯光折射，仿佛在玩一场光影游戏，干净剔透又饶富趣味性。

Look, in the public area, there is an electroplated metal water drop art installation, which fits the theme of "water".

瞧，在公共区域中，有一个电镀的金属水滴艺术装置，正正切合了“水”的主题。

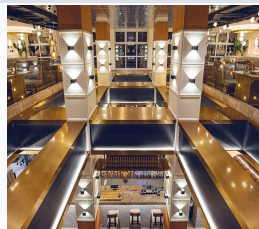
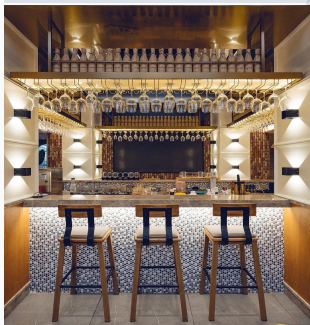


THE BAR PROJECT CASE 酒吧工程案例



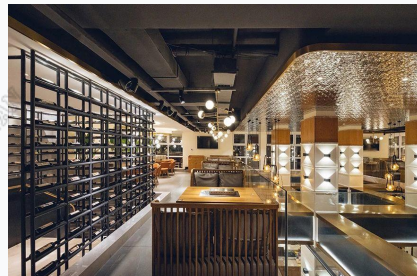
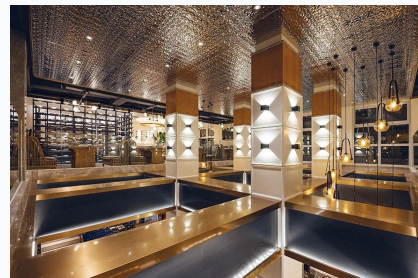
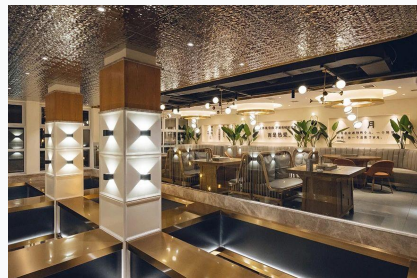
The orange light in Jiudu reflects the metallic luster. Through the tall floor to ceiling windows, people with stories will be attracted in to narrate their own stories or to be a qualified listener.

久度里橘黄色的灯光反射金属光泽，透过高大的落地窗释放热情，将有故事的人吸引进来，尽情叙事自己的故事或是做一个合格的聆听者。



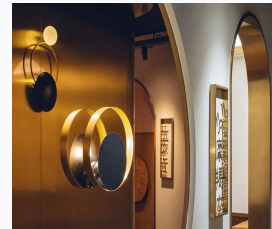
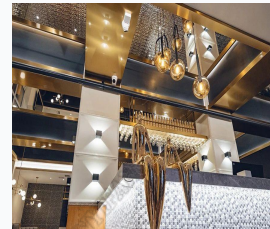
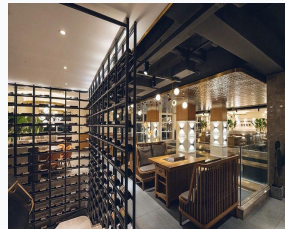
This city gathering place full of stories, called Jiudu bar, commonly known as "Hermes barbecue", combines the best food of the night - barbecue, wine.

这间装满故事的城市聚集地，名久度里的酒吧，俗称“烧烤界的爱马仕”，将夜晚最美好的食物结合——烧烤，酒。



A large area of stainless steel water ripple ceiling reflects the flowing and colorful light, meeting the visual impact of people, as if in the underwater world.

室内大面积的不锈钢水波吊顶，反射出流光溢彩的光线，满足人的视觉冲击，仿佛置身海底世界。



Metal always gives people a sense of luxury, but in this bar, you can feel a warm feeling. It is the impact of luxury and warmth that shows the unique charm of this bar. The integration of water and fire, after all, can not tell a winner or loser.

金属总是带给人一种奢侈华丽感，但在这间酒吧里你却能体会到一种温暖的感觉，正是这种奢华与温暖的撞击，将这间酒吧的独特韵味展示出来。水与火的相融，终究分不出一个胜负。