



Since 2006

<https://jyf-metal.com>

Metal Table

Contact: Lucky Zou

Contact information: 133 3648 6800 (Wechat)

Email: zoulucky@fsjinyifan.com

Factory (Office) address: No. 3, block 4, Liyuan Logistics City, No. 38, Gongye Third Road, Tanzhou Industrial Zone, Chencun Town, Shunde District, Foshan City, Guangdong Province

联系人: 邹小姐

联系方式: 133 3648 6800 (同微信)

邮箱: zoulucky@fsjinyifan.com

工厂(办公)地址: 广东省佛山市顺德区陈村镇潭洲工业区工业三路38号力源物流城B区4座3号

Foshan Jinyifan Metal Products Co., Ltd.

佛山市金一帆金属制品有限公司

Company introduction 公司介绍

金一帆长期致力于不锈钢制品设计和生产，是一家集研发、设计、制造、销售、安装于一体的金属制品专业厂家。

我们致力于为客户提供更好的产品体验，完整的服务体系和最佳解决方案。产品主要服务于国内外星级酒店、商业场所、别墅、市政工程等，我们长期服务于世界著名酒店，希尔顿、喜来登、威斯丁等，服务于国内万科房产、保利地产、四季连锁酒店等装饰工程项目。在高端不锈钢装饰板材和定制产品市场领域具有领先的影响力，成为国内外装饰工程定制首选服务商。

我们拥有专业的工程师和设计团队，为客户提供最好的质量和满足个性化的要求，我们可以根据您的工程需要提供更好的设计和生产有利的建议，确保您的产品与您的使用能够完美结合，同事为您节省成本，为您的金属建筑装饰工程提供设计制造解决方案。

作为不锈钢行业的专业团队，通过有效的订单安排，真诚的工作态度和严格的质量控制，金一帆与国内外许多知名企业建立了很好的长期合作关系，产品远销欧美、中东、东南亚，质量、信誉和优质的产品和服务一直是并将永远是我们追求的目标。

Jinyifan has been committed to providing One-stop Solution Service for a long time. As a professional metal product factory, we are not only specialized in designing and producing stainless steel products, but also R & D, selling and installation

Specially Occupied in providing product experience service, complete service system and best one-stop solutions, we are well received by many customers at home and abroad, who are from world famous hotels like Hilton, Sheraton, Westin and Vanke, Poly Real Estate and Four Seasons Hotels in China as well as other Commercial places, villas and municipal engineering project. With a leading influence in the high-end stainless steel decorative plate and customized products market, Jinyifan has become the preferred service provider of decoration engineering customization at home and abroad.

We have professional engineers and design teams, who are excellent in providing customers with the best quality and meeting their personalized requirements. Professional design and production suggestions are given by our engineers according to customer's needs to ensure their perfect combination with products with less cost.

As a professional team in stainless steel industry, Jinyifan establishes a good long term cooperative relationship with many well-known enterprises at home and abroad through our effective order arrangement, sincere attitude and strict quality control. Our products are mainly exported to Europe, America and Middle East and Southeast Asia. Perfect products, great service and good reputation will always be our goals that we have been pursuing.



rodu





Refused To Rust

拒绝生锈

Adopt high quality stainless steel material,make the product not rust by brushed and PVD color coating.

采用优质不锈钢材料，通过拉丝和PVD彩色涂层使产品不生锈



Anti-Fingerprints

防指纹

PVD color coating peocess,good gloss,anti-fingerprints.

PVD彩色涂层工艺，光泽好，防指纹

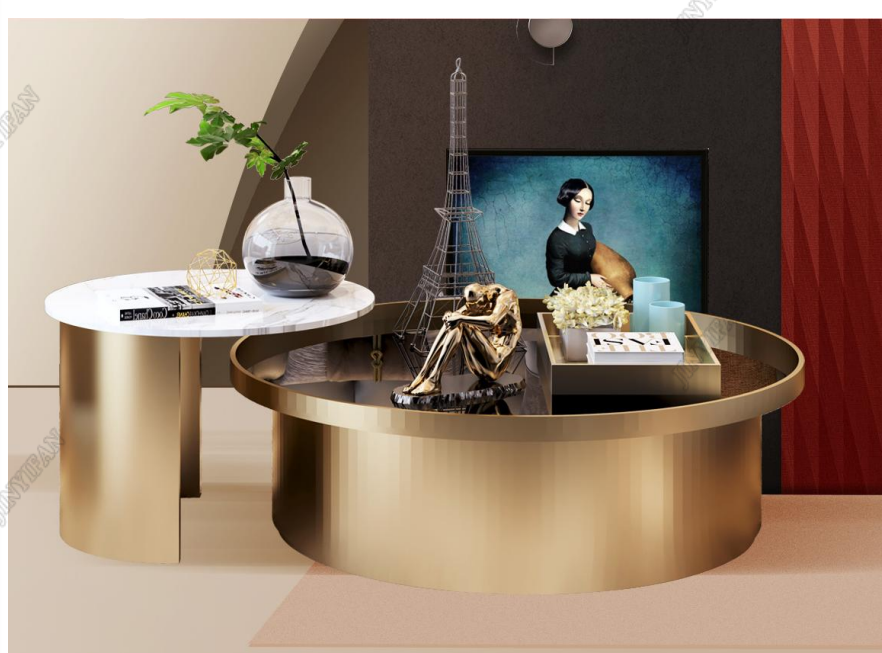


Refused To Spray Paint

拒绝喷漆

Spray paint products used poor iron ,easy to remove pain and rust.

使用的喷漆产品，容易去除油漆和铁锈





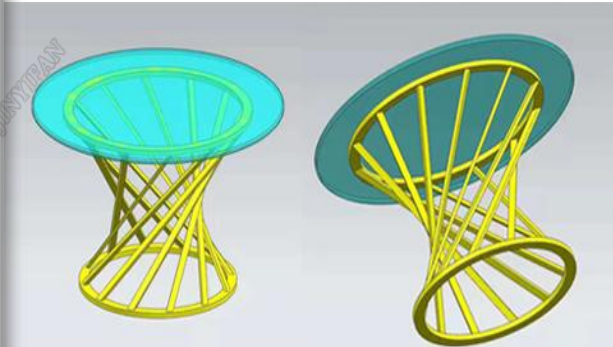
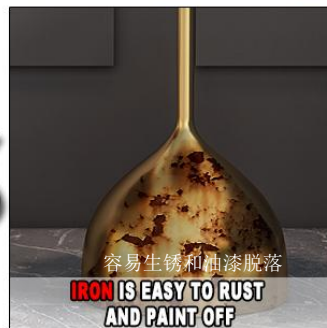
VS



VS

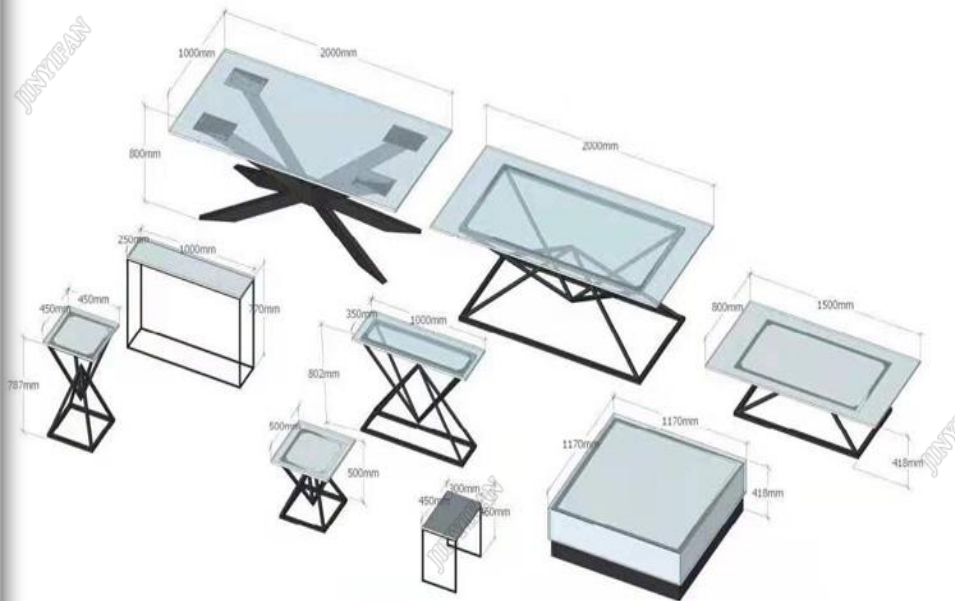


VS



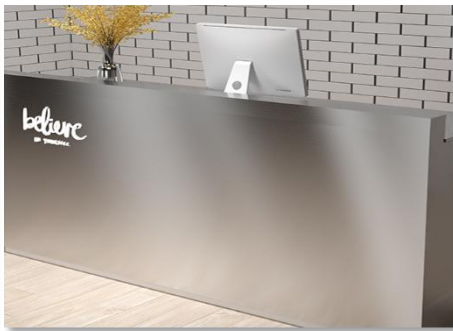
we have a professional
and powerful team of
engineering designers.
Installation guidance
& production for metal
products and metal
projects.

我们拥有一支专业而强大的工程
设计、安装指导、生产金属产品
和金属工程的团队。











Reception hall with gray tone marble to build a low-key and practical space tone, supplemented by solemn atmosphere of metal embellishment, to build a muddy natural temperament, evoke a new field power

接待门厅以灰白色调大理石搭建低调实用的空间基调，辅以庄重大气金属色点缀，构筑浑然而成的气质，唤起全新场域力量。

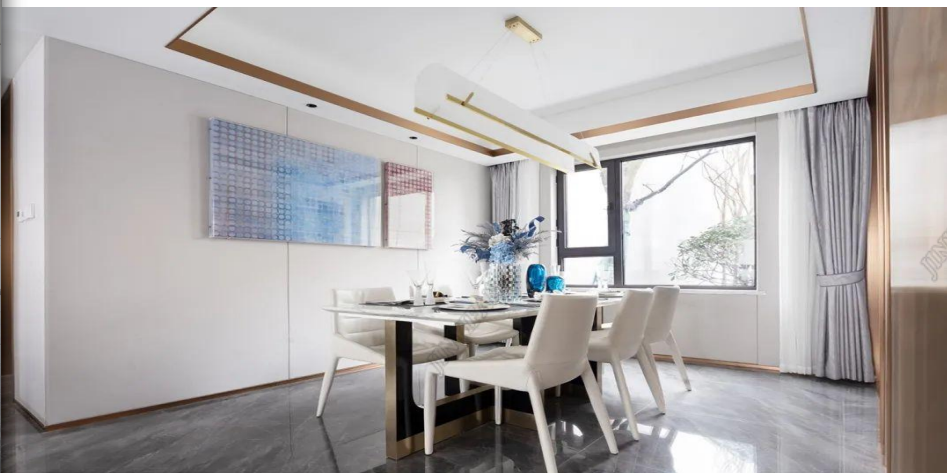


Bentley gold is the main color in the space, and light color is the background color. The low-key and calm luxury gives people unlimited freedom and tolerance. This gold is chosen as the keynote of space narrative, conveying life attitude and explaining the interpretation of comfortable sense of belonging.

空间内以宾利金为主色调，搭配浅色系底色，低调沉稳的奢华给人以无限的自由包容。选择这一抹流金作为空间叙事的基调，传递生活态度，诉说关乎舒适归属感的解读。

The space composed of marble, metal and leather gives the space due texture and temperature with soft color of weak contrast, simple but returning to the original texture

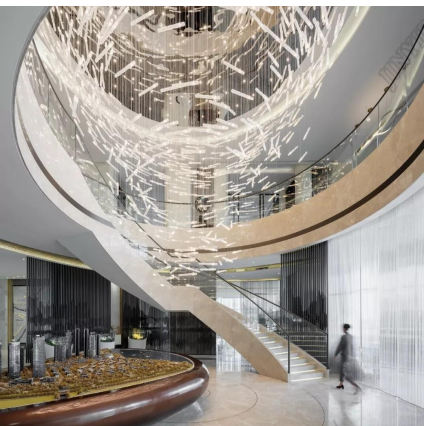
大理石、金属和皮革构成的空间，以弱对比的柔和色泽、简约却又回归本真的肌理，给予空间应有的质感与温度





The golden color flows like water, the black longitudinal lines extend upward, the wooden grid arrangement gives the dense rhythm of the space, the atmosphere seems to be in, but also do not break the aesthetic charm of natural simplicity. The gold front desk presents a mirror effect, infiltrating the water's intelligence, and the warm light of the ceiling tacit echo.

金色如水般流淌，黑色的纵向线条向上延展，木栅排布出空间的疏密节奏，大气俨然中，亦不失自然朴质的美学风韵。金色的前台呈现出镜面效果，浸润着水的灵透，与天花的暖光默契呼应。



The light warmth of rice tonal, the temperament of grey tone, the furniture of modern feeling, the rules and irregularities of point, line and surface, because of the clever collocation and combination of the designer, below the inclined sunshine, there is a tacit understanding and interactive relationship brewing in the meanwhile, let the people who place oneself in them feel coordinated and natural modern poetry.

米色调的轻暖，灰色调的气质，现代感的家具，点、线、面的规则与不规则，因设计师巧妙的搭配组合，在倾斜的阳光下，有一种默契和互动关系在其间酝酿，让置身于其中的人感受到协调而自然的现代诗意。

