



Metal Embossed Sheet

Contact: Lucky Zou
Contact information: 133 3648 6800 (Wechat)
Email: zoulucky@fsjinyifan.com
Factory (Office) address: No. 3, block 4, Liyuan Logistics City, No. 38, Gongye Third Road, Tanzhou Industrial Zone, Chencun Town, Shunde District, Foshan City, Guangdong Province

联系人: 邹小姐
联系方式: 133 3648 6800 (同微信)
邮箱: zoulucky@fsjinyifan.com
工厂(办公)地址: 广东省佛山市顺德区陈村镇潭洲工业区工业三路38号力源物流城B区4座3号

Foshan Jinyifan Metal Products Co., Ltd.

佛山市金一帆金属制品有限公司

Companies Introduce/公司介绍

佛山市金一帆金属制品有限公司是一家专注于金属产品为主导的个性化工程定制的一站式生产和服务企业。

拥有先进的产品生产线和研发团队，为客户提供一系列装饰工程解决方案。主要产品：金属装饰板、金属天花、金属幕墙、金属艺术制品等。

我们团队根据您的工程需要提供更好的设计和生产有利的建议，确保您的产品与使用能够完美结合，同时为您节省成本，为您的工程提供设计制造解决方案。

我们长期服务于世界著名酒店，希尔顿、喜来登、威斯丁等装饰工程项目。同时为艺术家、建筑家、设计师及专业工程机构服务。

我们在高端不锈钢装饰板材和定制产品市场领域具有领先的影响力，成为国内外装饰工程定制首选服务商。

Foshan Jinyifan Metal Products Co., Ltd. is a one-stop production and service enterprise focusing on individualized engineering customization of metal products.

With advanced production lines and R & D team, Efansteel is committed to providing a series of decorative engineering solutions. Our main products are metal decorative sheets, metal ceiling, metal curtain wall, metal art products, etc.

In order to combine your products with its performance perfectly, our team will provide favorable design and production suggestions according to your engineering needs to save your costs.

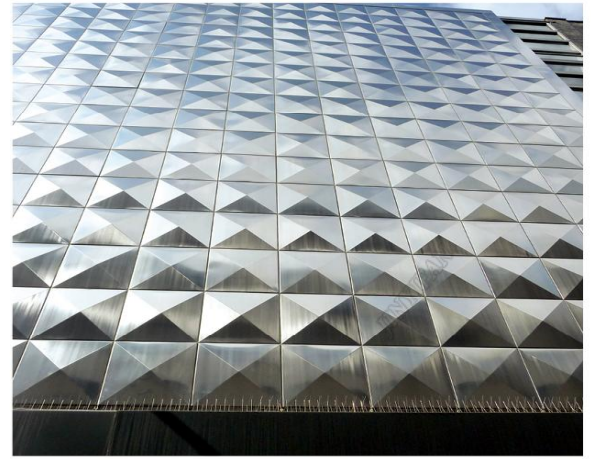
We have been serving world famous hotels such as Hilton, Sheraton, Westin and other decoration projects etc as well as artists, architects, designers and professional engineering institutions.

We have a leading influence in the field of high-end stainless steel decorative plate and customized products market, and become the preferred service provider of decoration engineering customization at home and abroad.

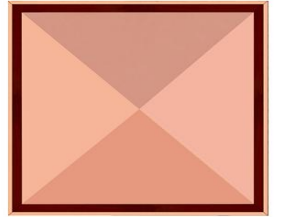


Companies Introduce/企业介绍

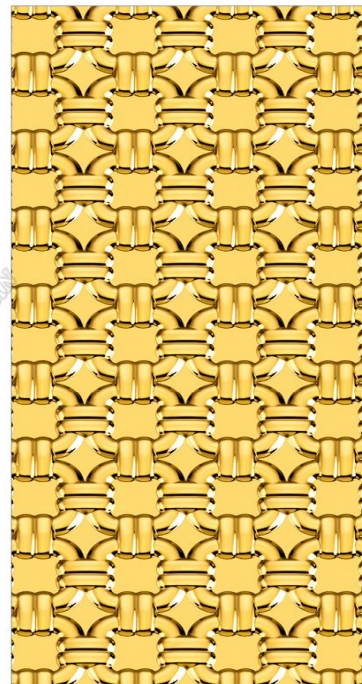




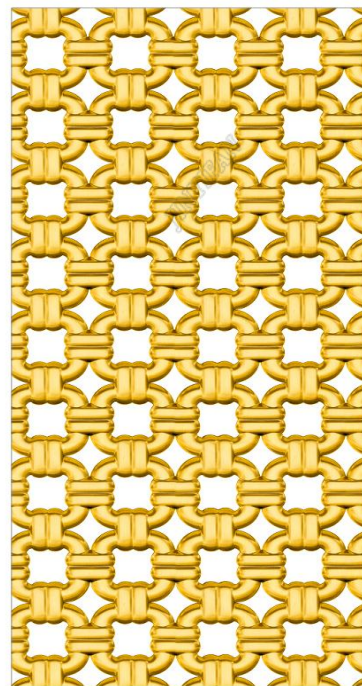
J-E1



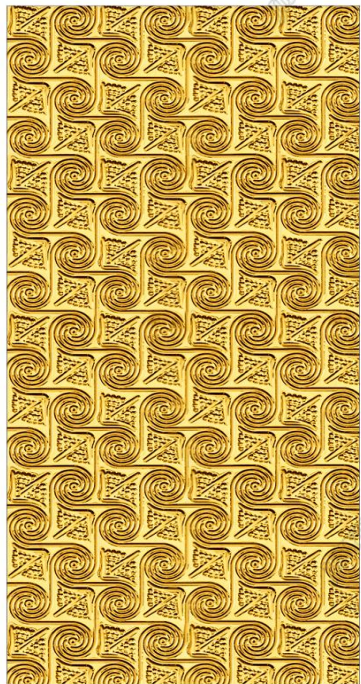
J-E2



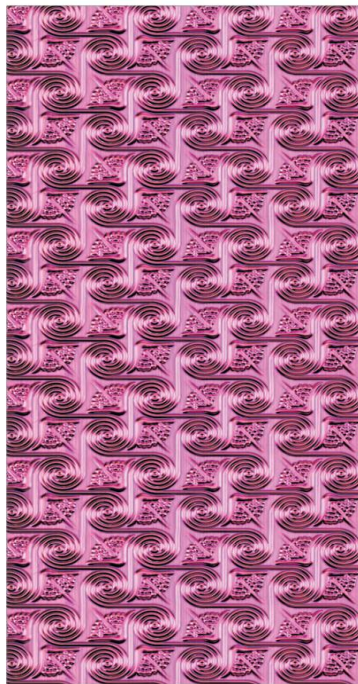
J-E3



J-E4



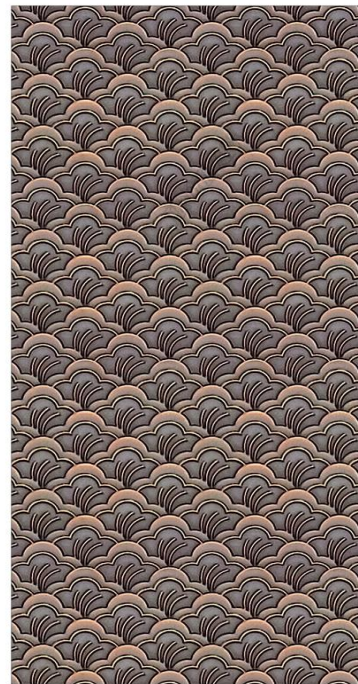
J-E4



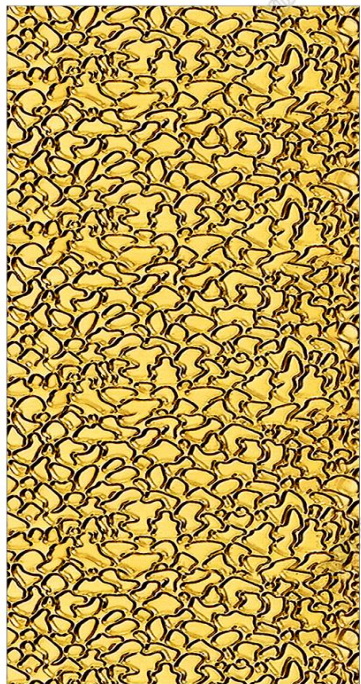
J-E5



J-E6



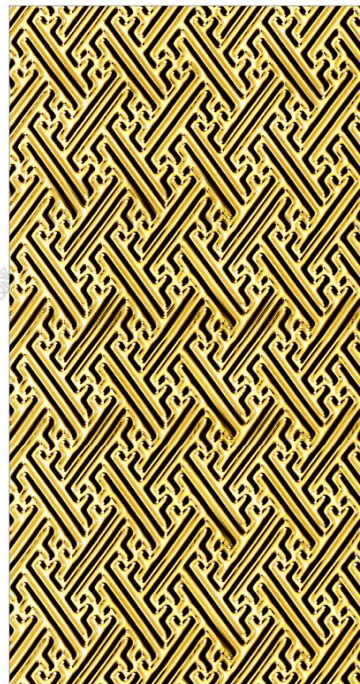
J-E7



J-E8



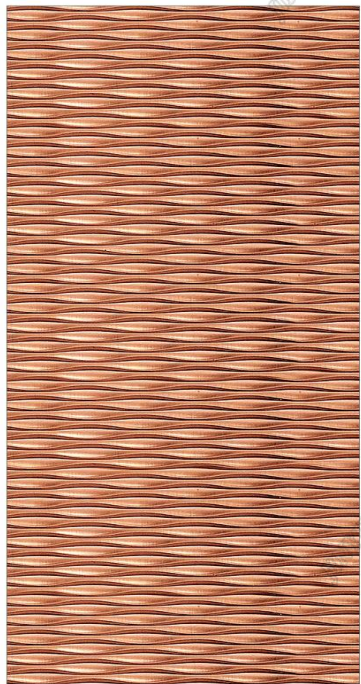
J-E9



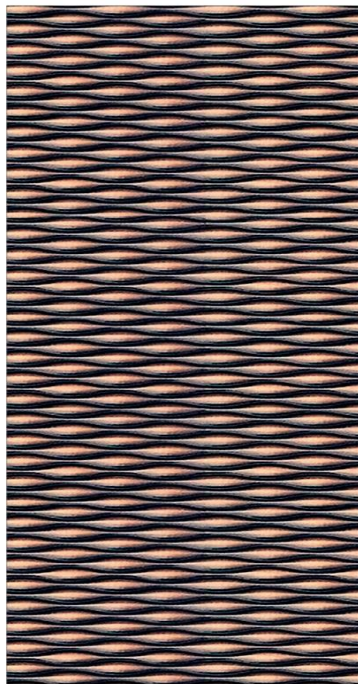
J-E10



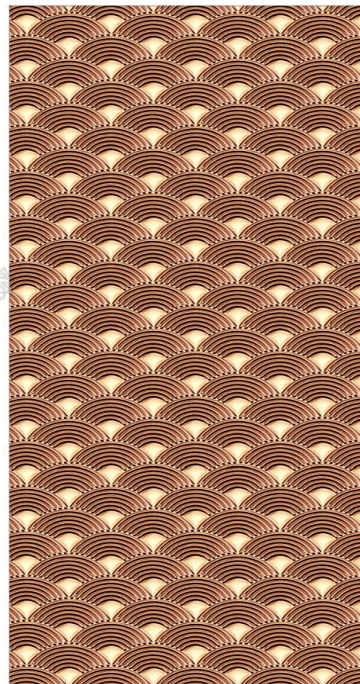
J-E11



J-E12



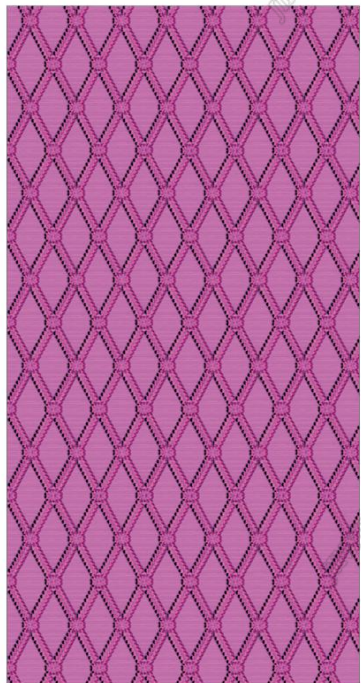
J-E13



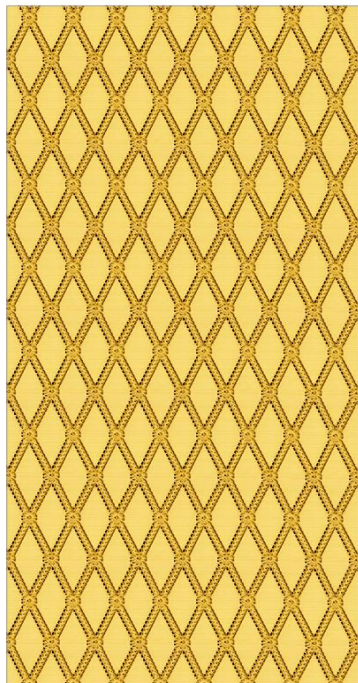
J-E14



J-E15



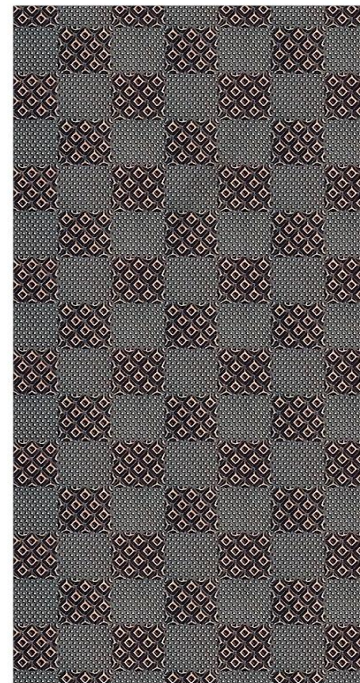
J-E16



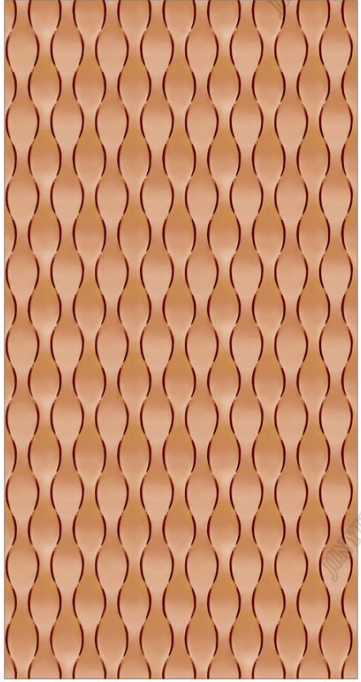
J-E17



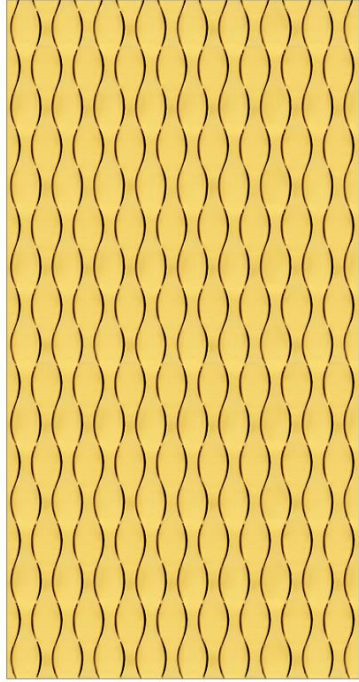
J-E18



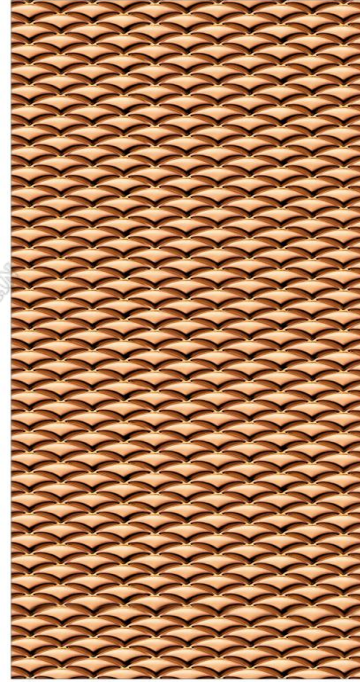
J-E19



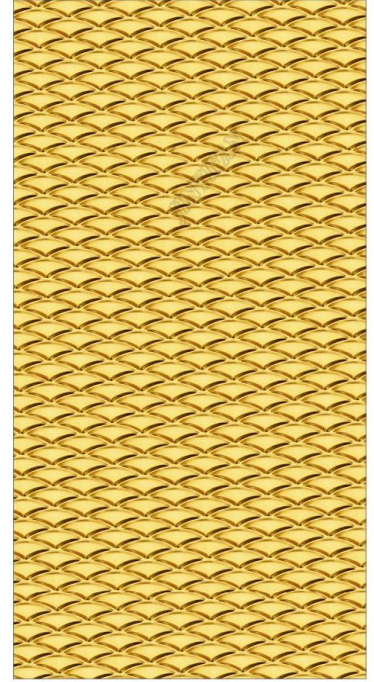
J-E20



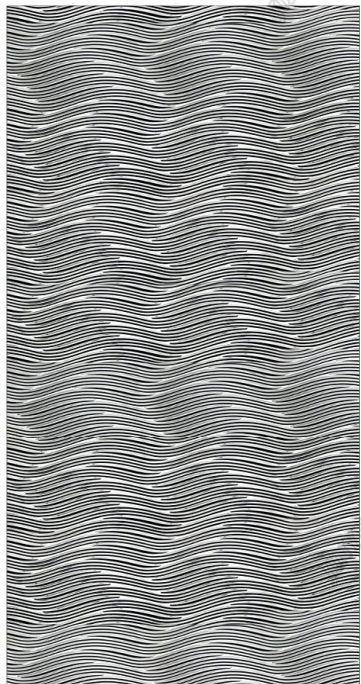
J-E21



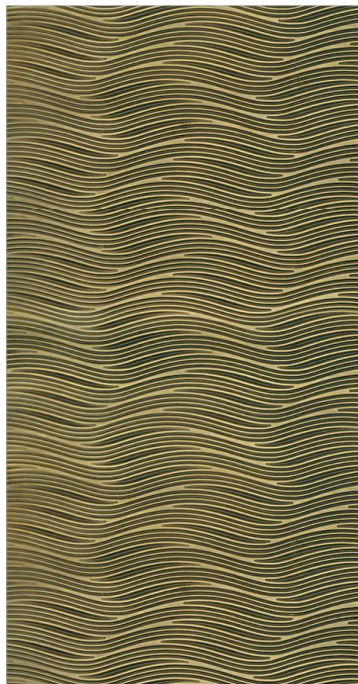
J-E22



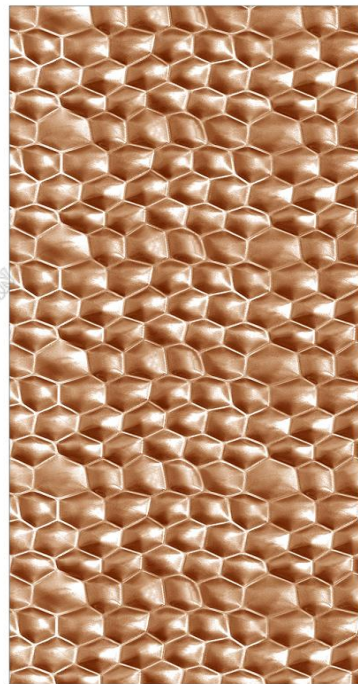
J-E23



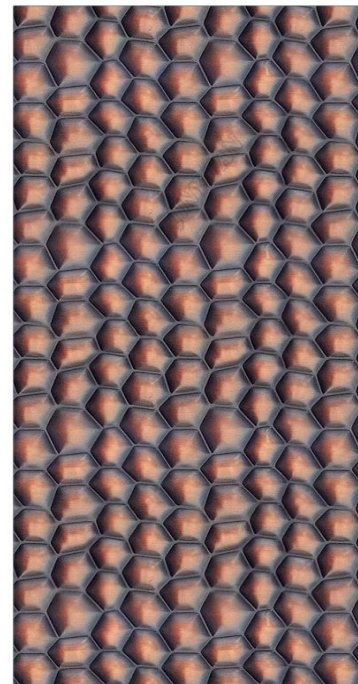
J-E24



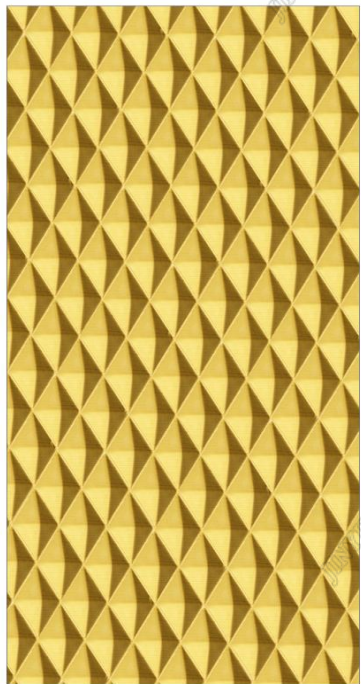
J-E25



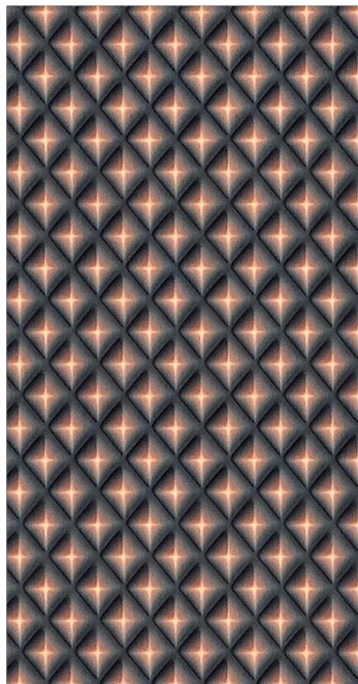
J-E26



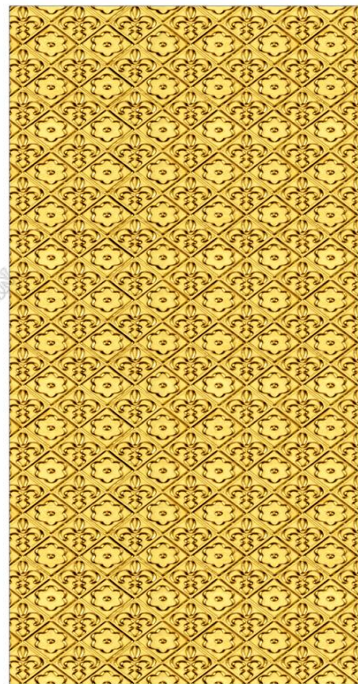
J-E27



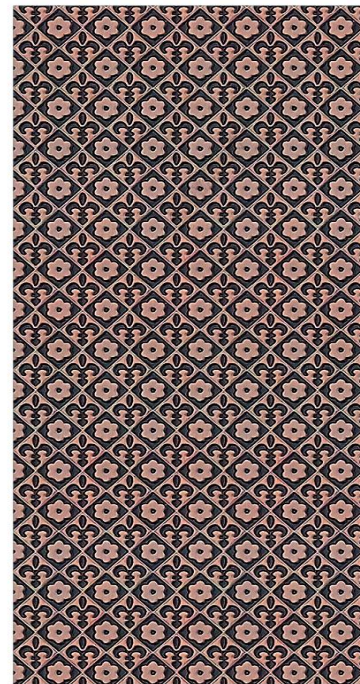
J-E28



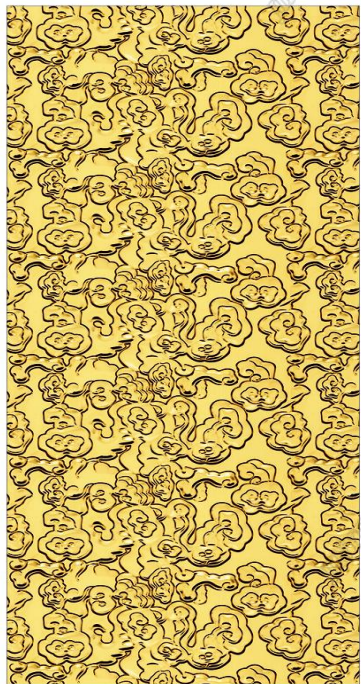
J-E29



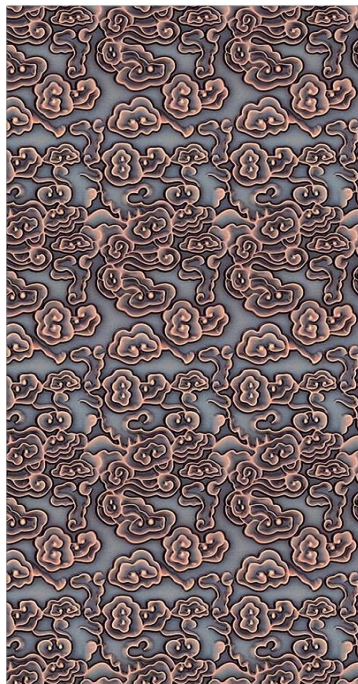
J-E30



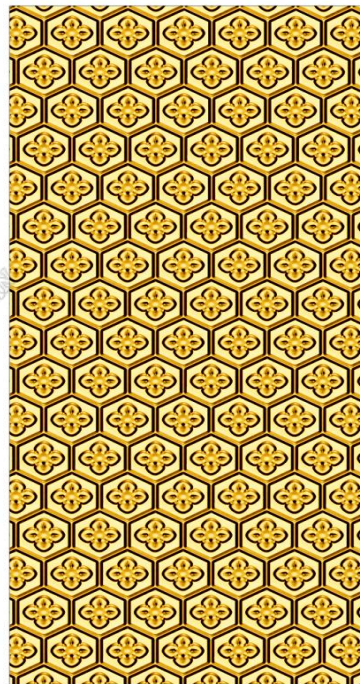
J-E31



J-E32



J-E33



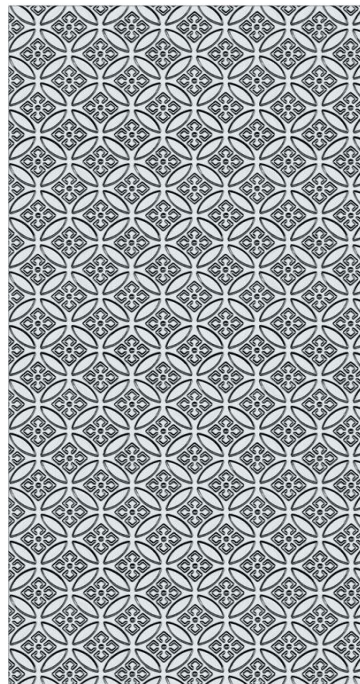
J-E34



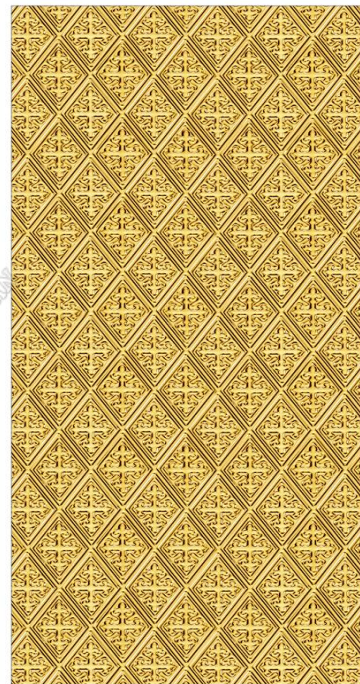
J-E35



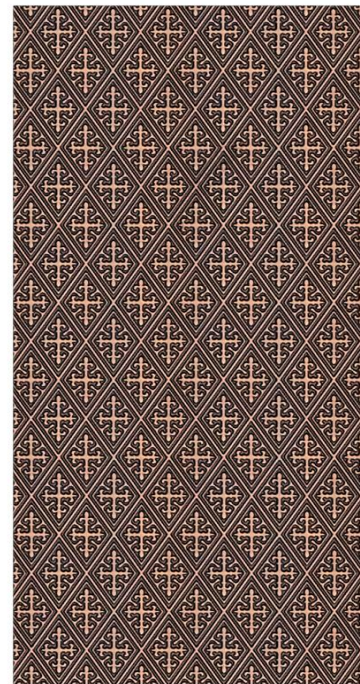
J-E36



J-E37



J-E38



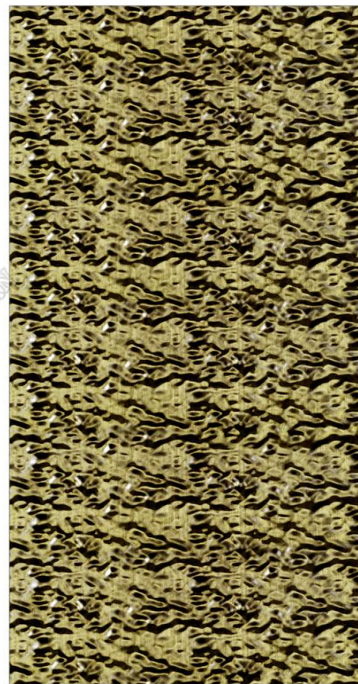
J-E39



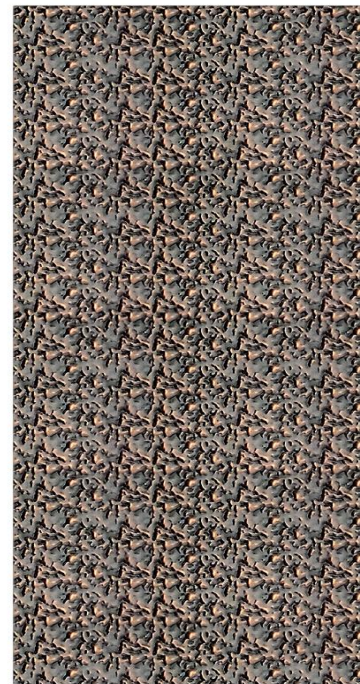
J-E40



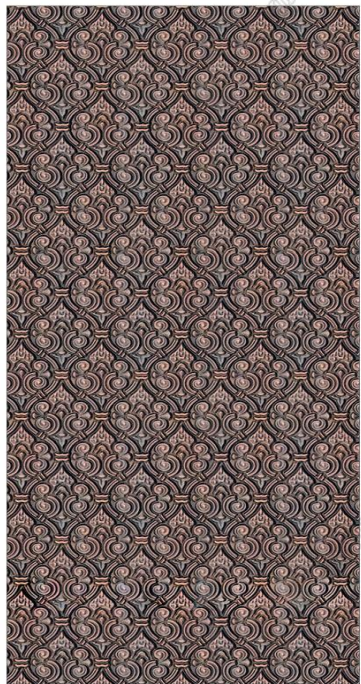
J-E41



J-E42



J-E43



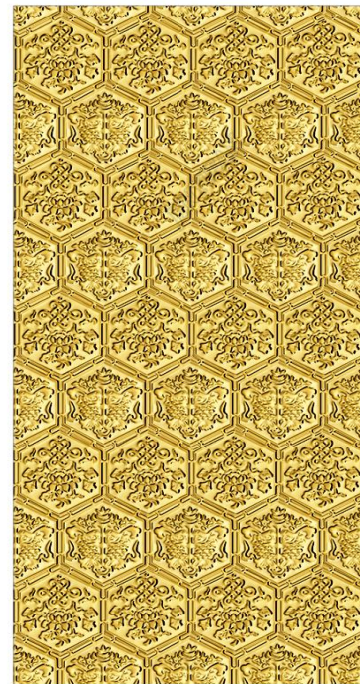
J-E44



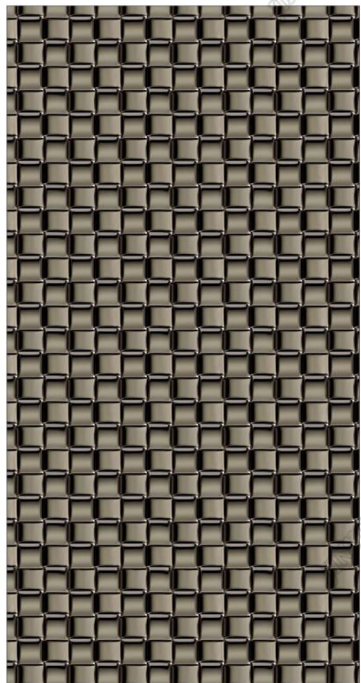
J-E45



J-E46



J-E47



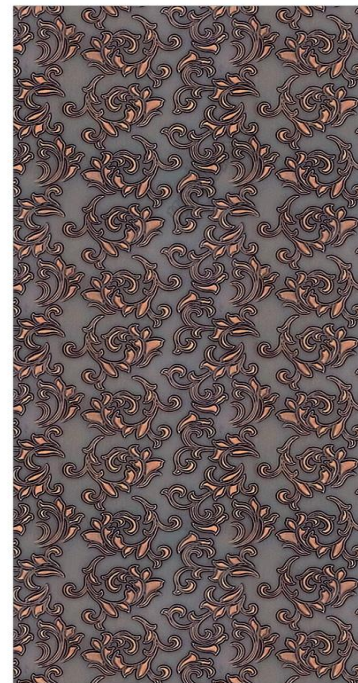
J-E48



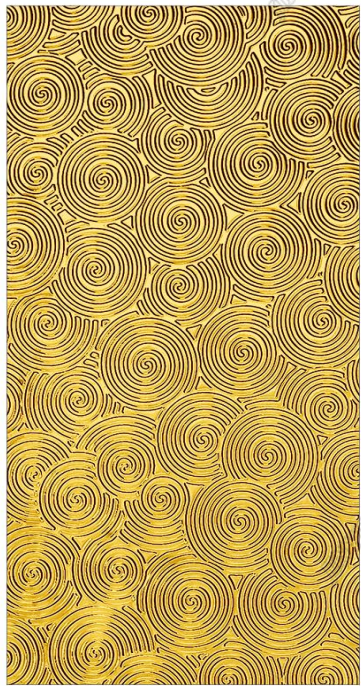
J-E49



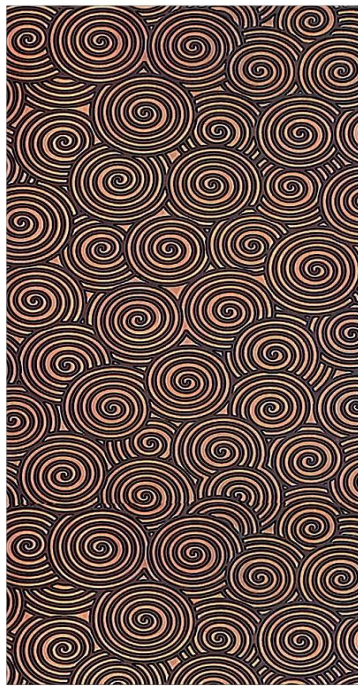
J-E50



J-E51



J-E52



J-E53



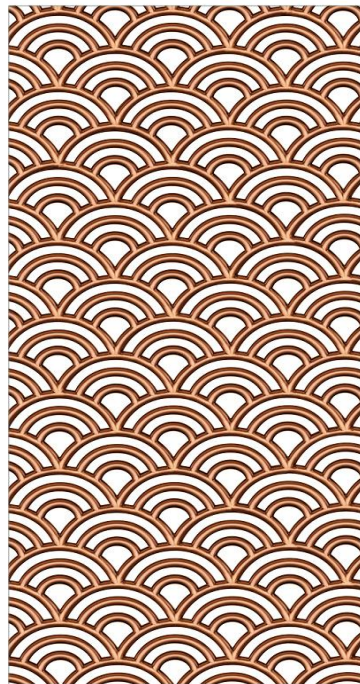
J-E54



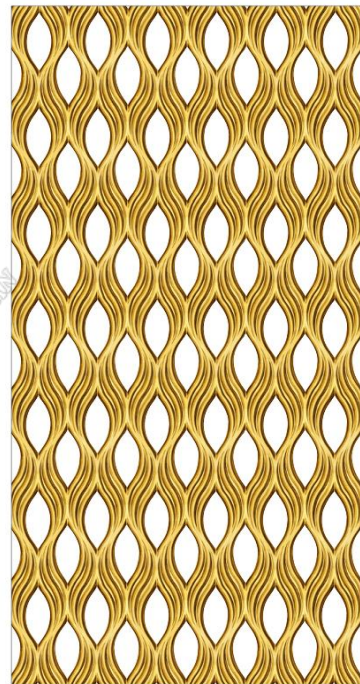
J-E55



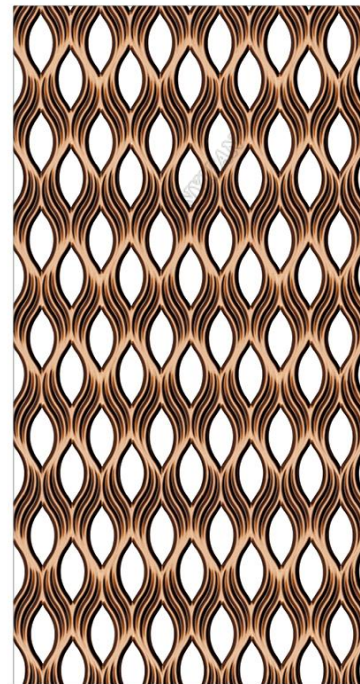
J-E56



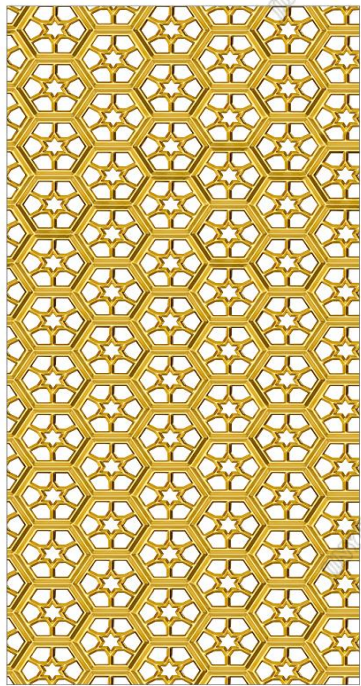
J-E57



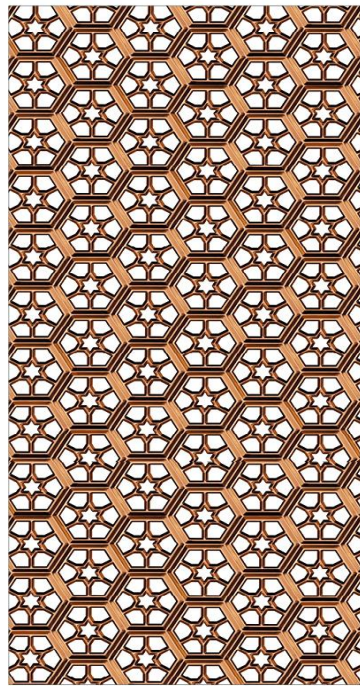
J-E58



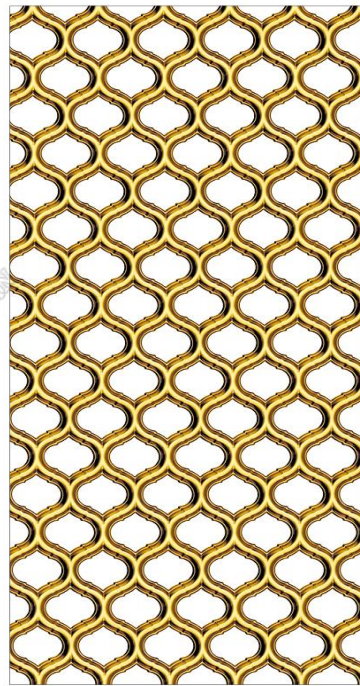
J-E59



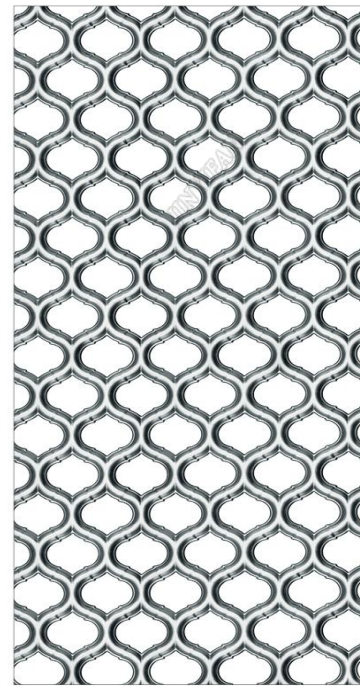
J-E60



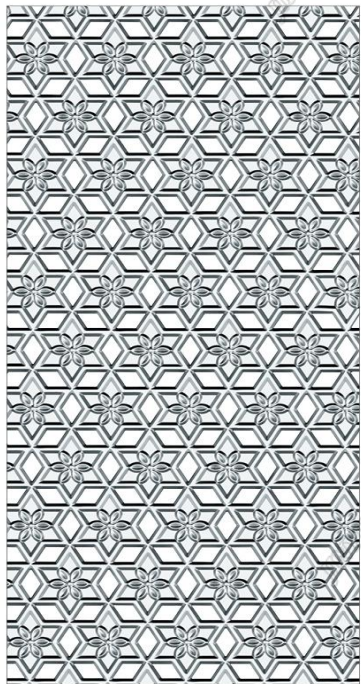
J-E61



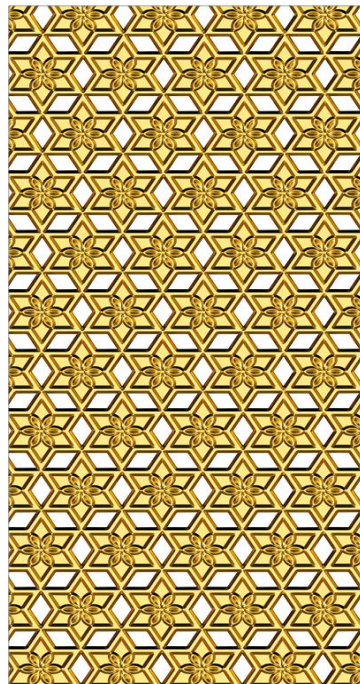
J-E62



J-E63



J-E64



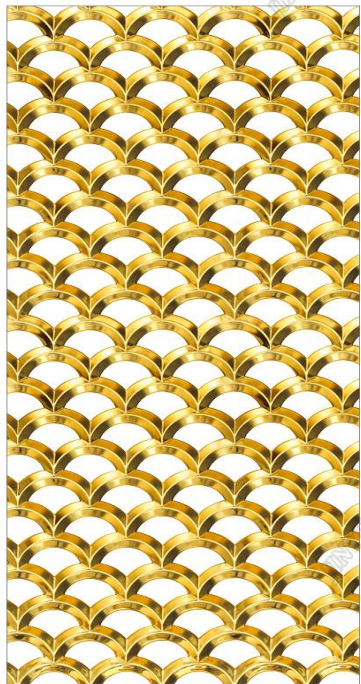
J-E65



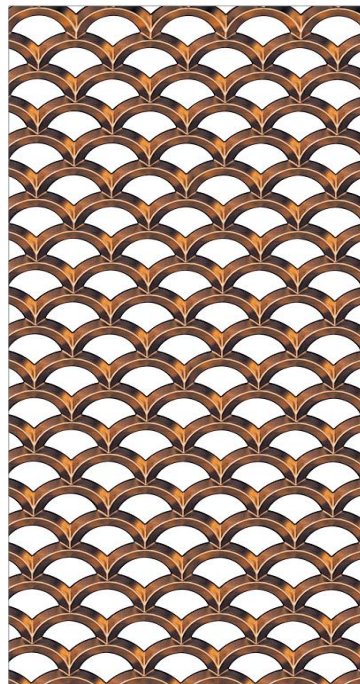
J-E66



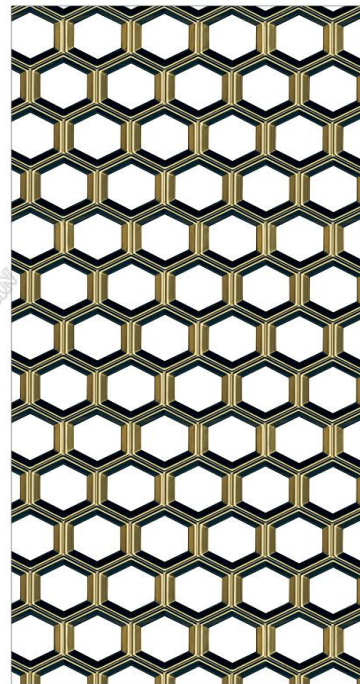
J-E67



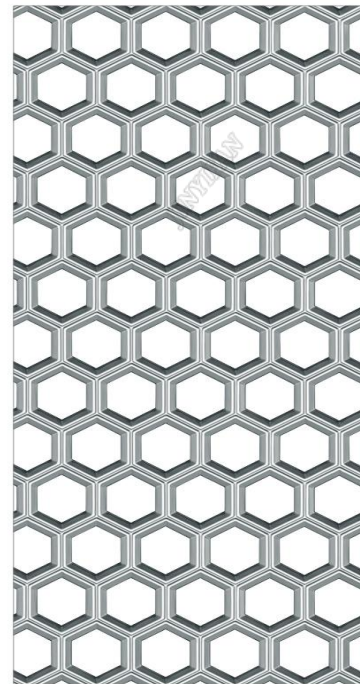
J-E68



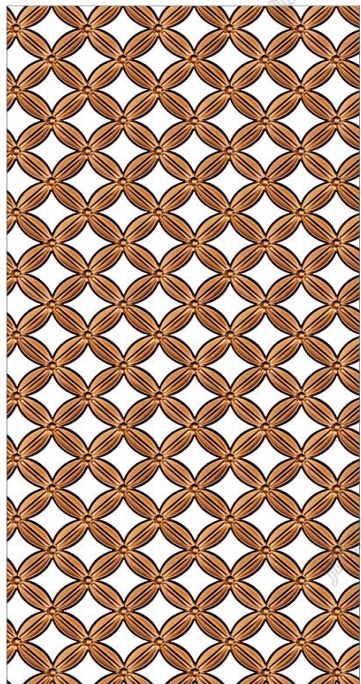
J-E69



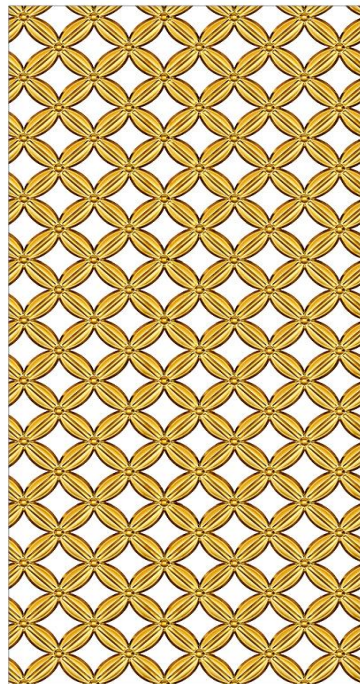
J-E70



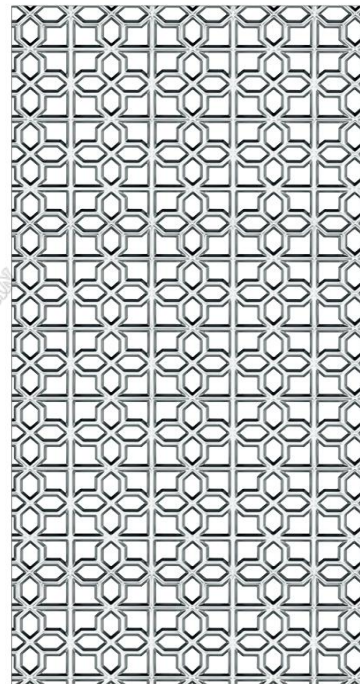
J-E71



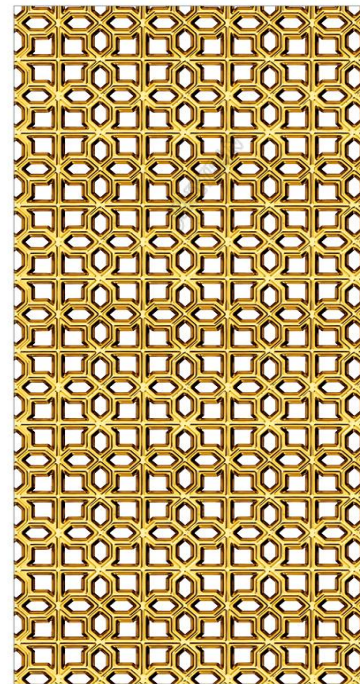
J-E72



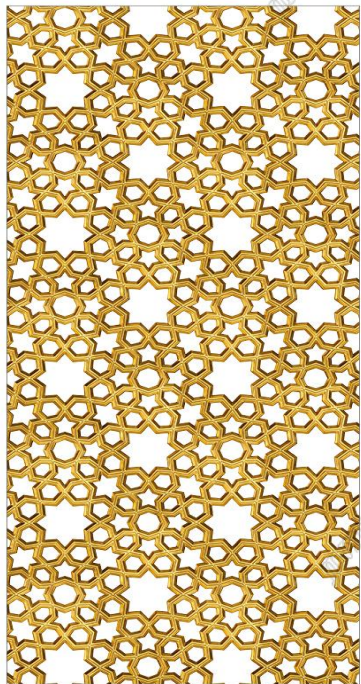
J-E73



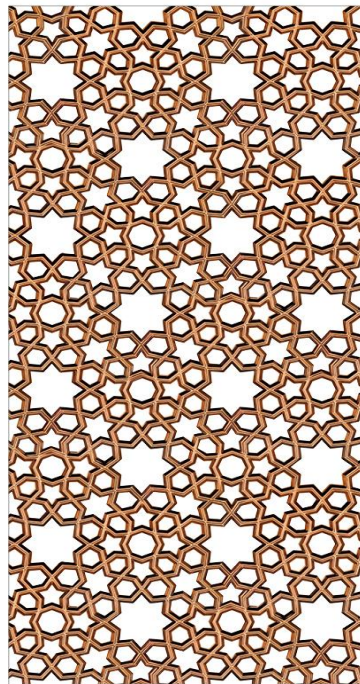
J-E74



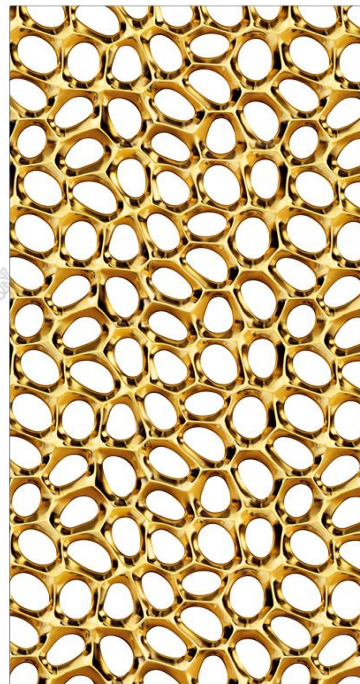
J-E75



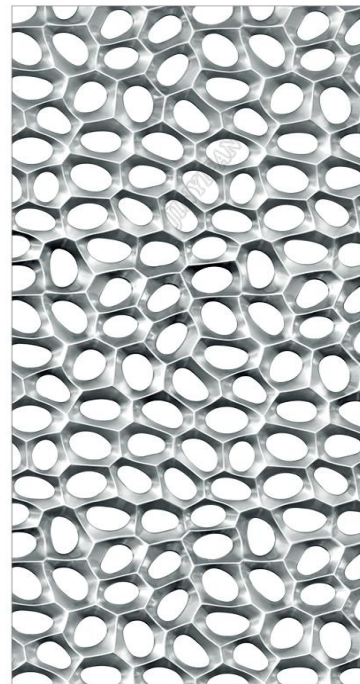
J-E76



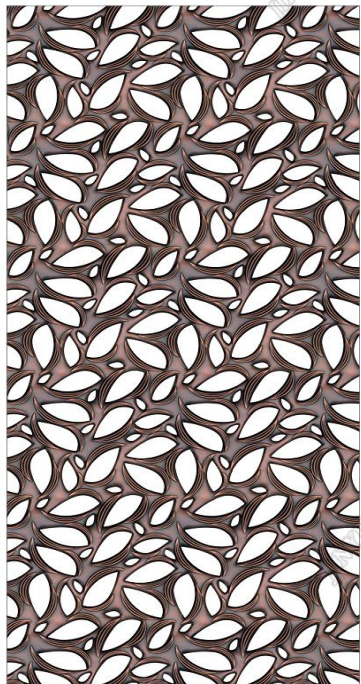
J-E77



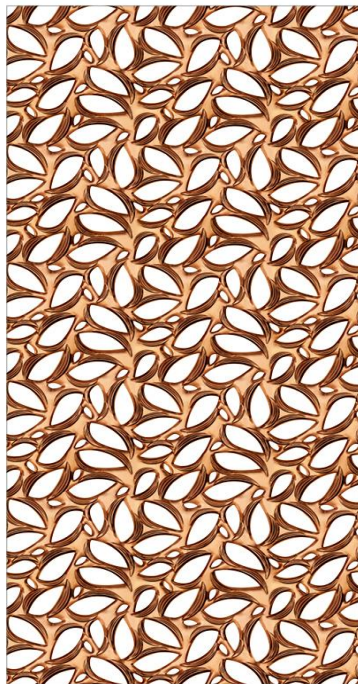
J-E78



J-E79



J-E80



J-E81



J-E82



J-E83



J-E84



J-E85

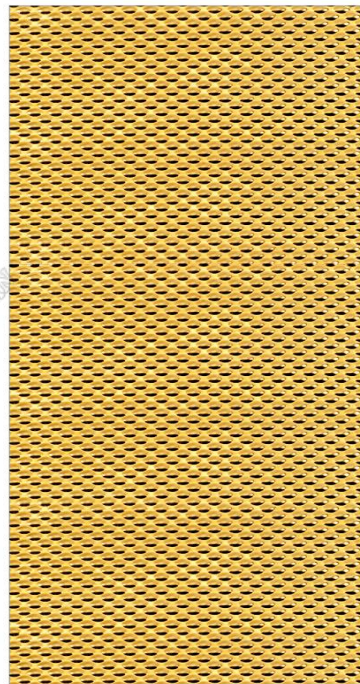




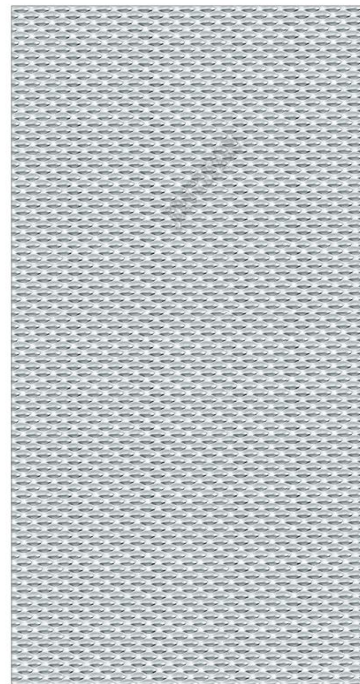
J-E86



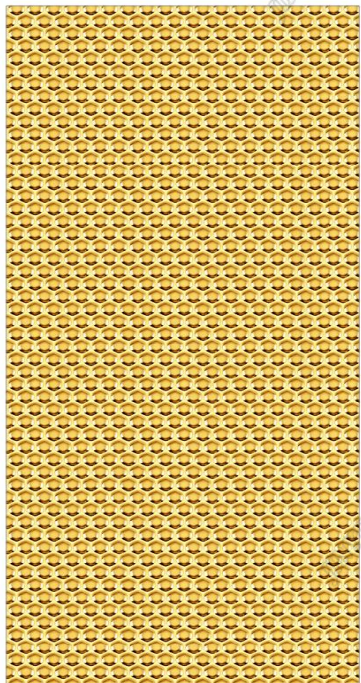
J-E87



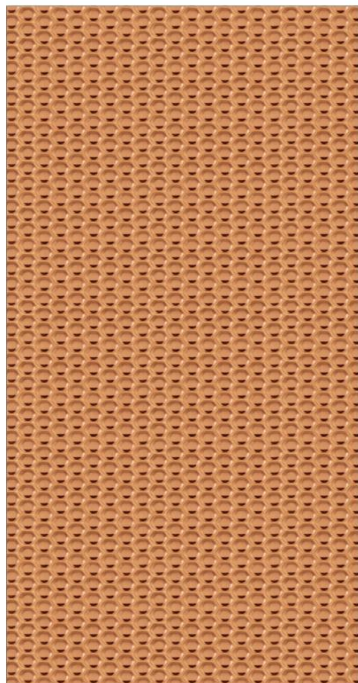
J-E88



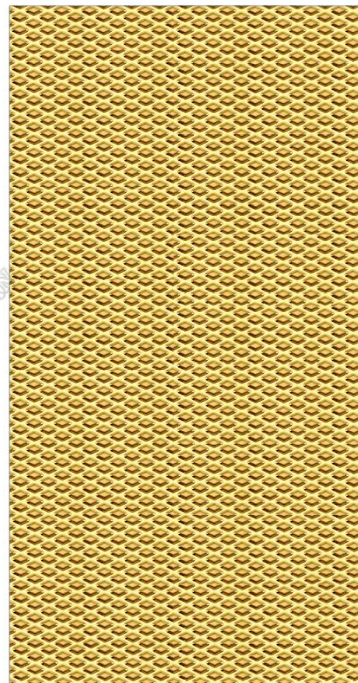
J-E89



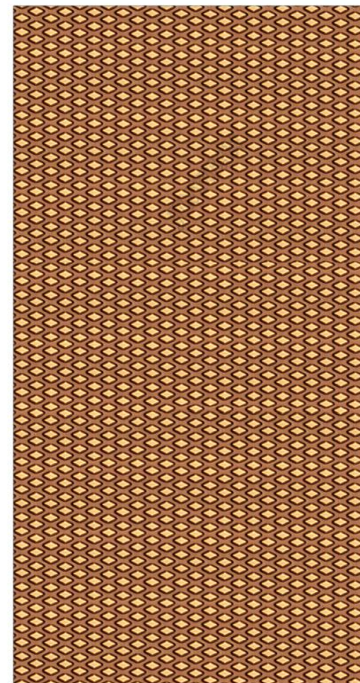
J-E90



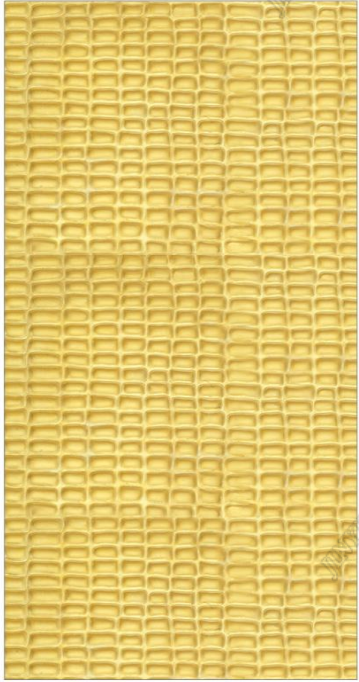
J-E91



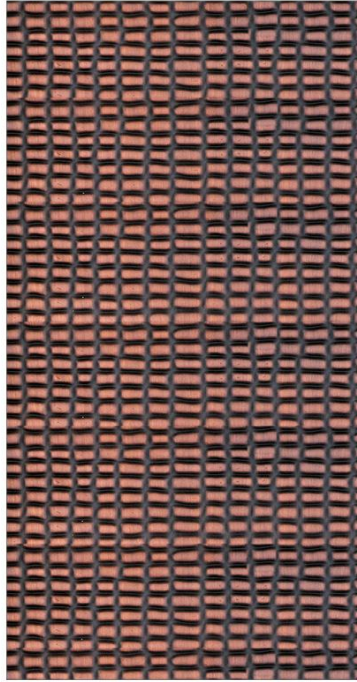
J-E92



J-E93



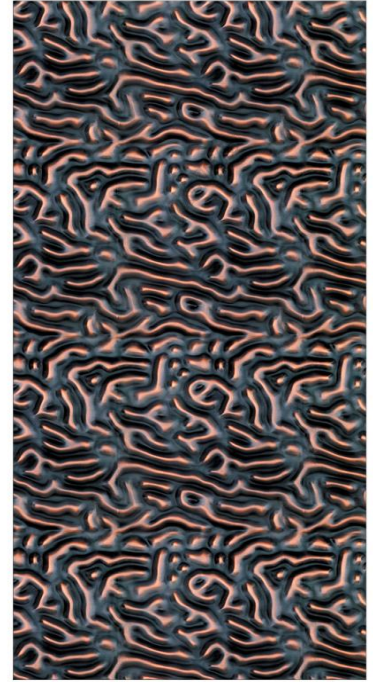
J-E94



J-E95



J-E96



J-E97











夜色倾城酒吧

Night COLOR
DISCO BAR & CLUB

















Clean Way/清洁方式

Daily Cleaning/日常清洁

Please use soapy water or neutral detergent (30-40%) cloth to clean stainless steel surface gently. Then use clean water and fine cotton cloth to dry and absorb excess water.

请使用浸泡了肥皂水或中性洗涤剂（以30-40%的水稀释）的细棉布轻擦不锈钢片的表面，再使用清水和细棉布抹干和吸收多余的水分。

Fingerprint Cleaning/指纹清洁

Use acetone or alcohol to clean the surface, then dry and absorb excess water with clean water and fine cotton cloth.

请使用丙酮或酒精擦拭，再使用清水和细棉布抹干和吸收多余的水分。

Heavily Stained Cleaning/大量污渍的清洁

Grease or oily marks on the surface can be wiped dry with an organic solvent such as acetone or alcohol, then use water and a muslin cloth to absorb excess water.

表面的油脂或油性记号可以使用有机溶剂如丙酮或酒精，再使用清水和细棉布抹干和吸收多余的水分。

Note: Do not use bleach, abrasive or chlorinated chemicals as cleaners, as they can cause discoloration and damage to stainless steel sheet surface.

注意：请勿使用漂白剂，研磨剂或氯化化学品作清洁剂，因为它们会导致不锈钢片的表面变色和损坏。

Operation Cautions/操作注意事项

1. Avoid letting hydrochloric acid solution, sodium hydroxide solution, bleach, cleaning agent and cement water contact stainless steel sheet, because the above material will make stainless steel surface with serious stains.

1. 避免让盐酸溶液，氢氧化钠溶液，漂白剂，擦洗剂以及水泥水接触不锈钢片，因为以上的材料会使不锈钢表面形成严重的污渍。

2. Do not weld stainless steel color sheet, because it will make the metal surface color change.

2. 不要用不锈钢彩色板进行焊接，因为会使金属表面的颜色改变。

3. Do not let PVC protective film on the stainless steel surface stay for more than three months after the delivery date, because its adhesive may be left on the surface.

3. 不要让不锈钢表面的PVC保护膜停留超过交付日期后的三个月，因为黏接胶可能会遗留在表面。

4. Do not leave iron powder, nails and other external materials on steel surface, because they will damage the rust resistance of stainless steel. Daily maintenance is necessary, please refer to the above cleaning methods.

4. 不要让铁粉，铁钉以及其他外部材料留在钢的表面，因为它们会损坏不锈钢的防锈性。日常维护是必要的，请参阅上述的清洁方法。